



上海交通大学医学院

Shanghai Jiao Tong University School of Medicine



Guide Book

International Clinical Elective Placement Programs

Shanghai Jiao Tong University School of Medicine



01
Introduction

03
Shanghai

Contents And Page Number



04

International
Clinical Elective
Placement
Programs

05

Contacts



06

Accommodation
Options

07

Transport

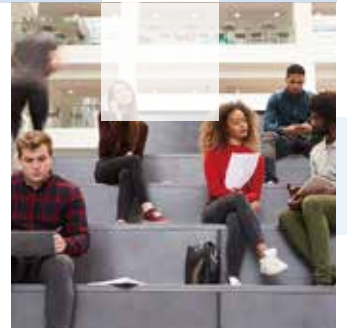


09

Visa

10

Before You Leave



11

Electricity

12

Departments
Accept ICEP



Introduction

Shanghai Jiao Tong University School of Medicine (SJTUSM) has a long history background dated back to 1952, when three international medical schools, which were St. John's University School of Medicine (1896-1952), Aurora University School of Medicine (1911-1952) and Tong-De Medical College (1918-1952), merged together. It is a research-oriented medical school with all-round development in medical education, clinical services, and scientific research, as well as other social services. The clinical medicine discipline is ranked first national wide according to the evaluation organized by Ministry of Education China.



SJTUSM offers an excellent environment for academic development and enjoys superiority in many disciplines and areas. There are 9 State Key Laboratories, 8 Ministry Level Laboratories, and 3 International Joint Laboratories. SJTUSM has established collaborative relations with around 70 universities abroad, focusing on student exchange, staff exchange, joint education programs as well as joint research symposiums. There are 13 affiliated hospitals with more than 20,000 beds in total. SJTUSM has produced remarkable results in scientific research and has all along been a leader in the number of research programs received, the amount of funding granted, and the number of key projects undertaken among medical schools domestically.



City of Shanghai

Shanghai has a total population of 24 million as of 2020 and is among the top 3 largest cities by population in China. It is a global city and major financial center, with influence in commerce, culture, finance, media, fashion, technology, and transport. Shanghai is a popular tourist destination renowned for its historical landmarks such as The Bund, City God Temple and Yu Garden, as well as the extensive and growing Lujiazui skyline. It has been described as the "showpiece" of the booming economy of mainland China.



International Clinical Elective Placement Programs

The international clinical elective placement program (ICEP) is liaised by Office of International Affairs (OIA) SJTUSM. We accept international students whose university/institute has student mobility agreement with SJTUSM. The duration of the placement is usually 4-8 weeks according to the agreement. The candidates can choose 1-3 department(s) for observer-ship rotation depending on their interests. An ICEP application needs to be submitted to the liaison officer at OIA through the student's home university/institute 3 months ahead of the placement commencement. The liaison officer provides visa, accommodation and other related information for reference.



Contacts

XU Shuyan, Liaison Officer

Office of International Affairs
Shanghai Jiao Tong University School of Medicine
Room 609, Science and Education Bd.
227 South Chong Qing RD. 200025 Shanghai

T +8621-63846590-776411

F +8621-63840879

E shuyanx@shsmu.edu.cn

DAI Jiaying, Deputy Director

Office of International Affairs
Shanghai Jiao Tong University School of Medicine
Room 611, Science and Education Bd.
227 South Chong Qing RD. 200025 Shanghai

T +8621-63846590-776411

F +8621-63840879

E daijy@sjtu.edu.cn

Emergency Contacts

Emergency Dial:



Police: 110



Fire: 119



Ambulance: 120

SJTUSM Campus Security: +862163846590-776597



Accommodation Options

1) Motai Hotel

Location: 113, Sinan Road, Shanghai (10 minutes' walk from Shanghai Jiao Tong University School of Medicine)

Price: 360rmb/night/room

Room Type: Single rooms, double rooms

Facilities: Spacious, comfortable beds, soft quilts, air-conditioner, TV, private bathroom, desk and chair

2) Eryi Hotel (On-site guest house at Shanghai Jiao Tong University School of Medicine)

Location: 227 South Chongqing Road, Shanghai

Price: 500rmb/night/room

Room Type: Single rooms, double rooms

Facilities: Private bathroom, air conditioner, TV, single bed, wardrobe, desk and chair

3) SJTUSM International student dormitory

Location: 227 South Chongqing Road, Shanghai

Price: 80-100rmb/night/room

Room Type: Single rooms, double rooms

Facilities: Private bathroom, air conditioner, desk and chair

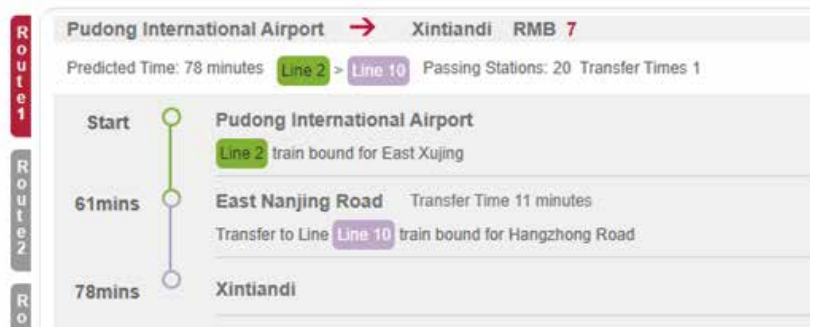
Note: Student need to apply at least three months before arrival. The reservation of rooms cannot be guaranteed due to very limited capacity.

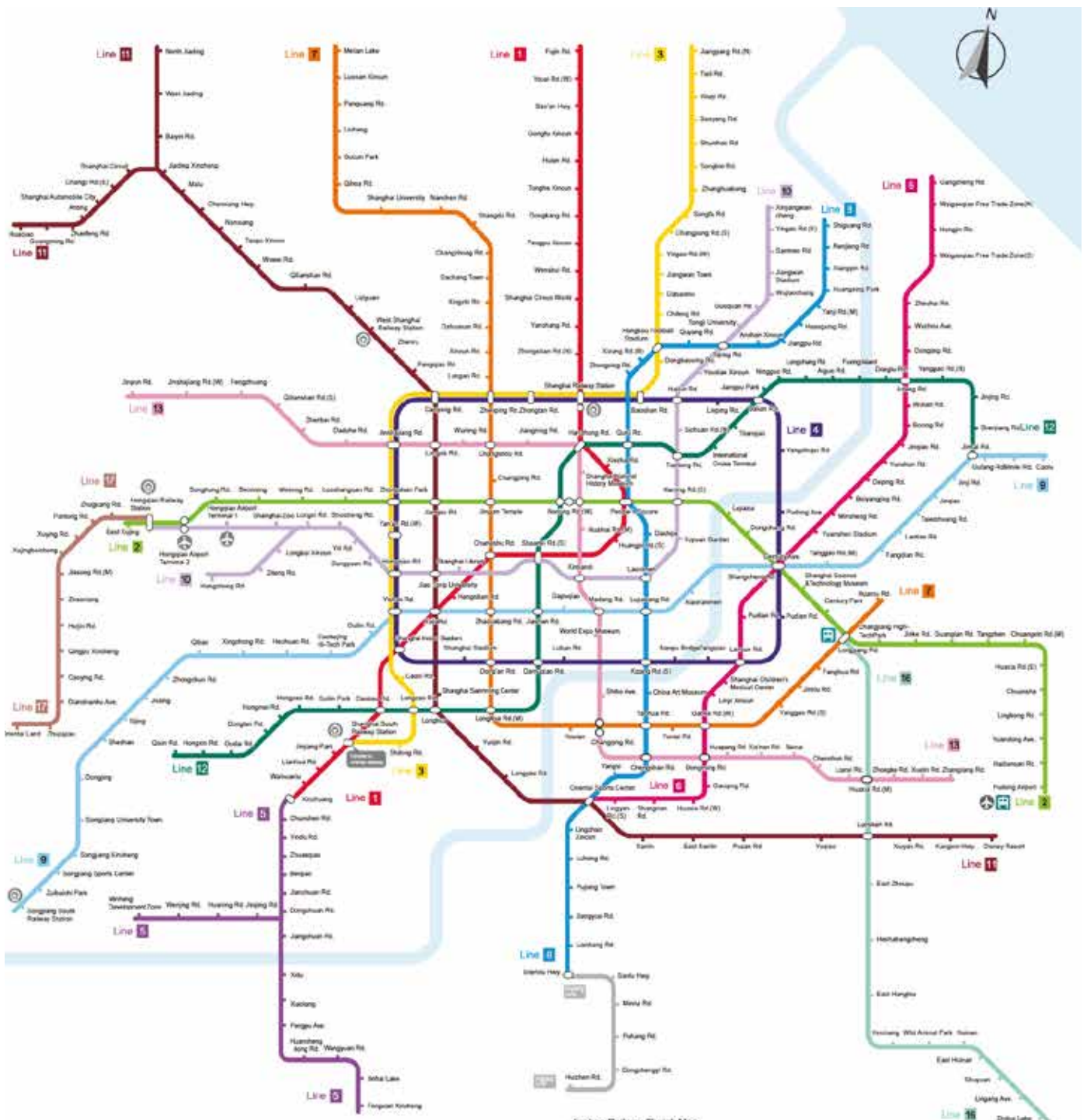


Transport

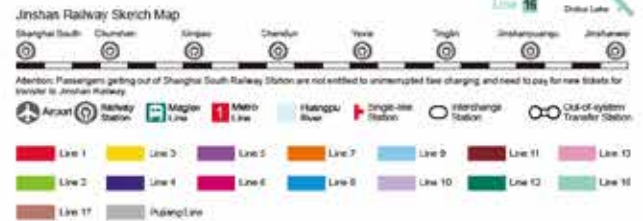
Shanghai has an extensive public transport network that covers most downtown and suburb areas. You can either take taxi or Metro from the airport to the destination. Taxis from the airport (PVG) to SJTUSM campus cost around 180RMB, and it takes 7RMB if you choose to take the metro which costs you 1.5 hours. Timetables, routes and trip planners can be found on the Metro line Info website below or you can scan the QR code with your smartphone.

<http://service.shmetro.com/en/>





Shanghai Metro Map QR Code





Visa



Short-term Study Visa (≤ 180 days):

- An Admission Letter will be sent to the successful applicant through international courier within 2 weeks after the submission. Applicant whose placement duration is less than 180 days is eligible to apply for short-term study visa (VISA type X2) with the admission letter, visa paperwork and a valid passport.



Long-term Study Visa (>180 days):

- An Admission Letter along with a JW202 form will be sent to the successful applicant through international courier within 3 weeks after the submission. Applicant whose placement duration is more than 180 days needs to apply for long-term study visa (VISA type X1) with the JW202 form, admission letter, visa paperwork and a valid passport. Any holders with X1 visa should apply for a Temporary Residence Permit from the local Exit and Entry Administration Bureau within 30 days upon entry into China, otherwise a penalty will be issued.

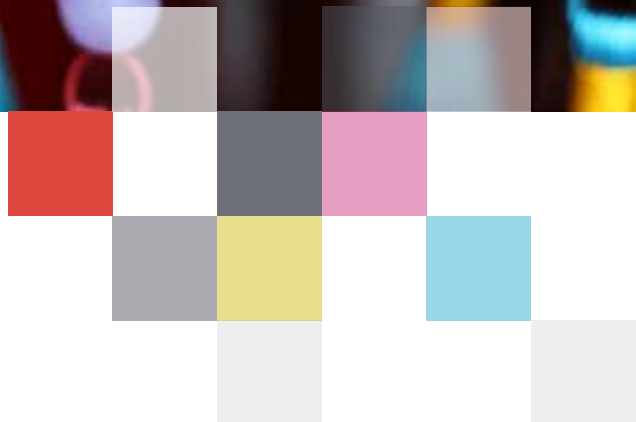


Before You Leave

Estimated Costs (for a 4-week period)

Housing	8,000.00 RMB
Local Transportation	300.00 RMB
Meals	2,000.00 RMB
Visa Application	1,000.00 RMB
Total	11,300.00 RMB

- Shanghai is no different from any other major city; please remember to keep your valuables at room as you are responsible for your own belongings.
- Major credit cards such as Mastercard and Visa are widely accepted in China. The cards must be in your name and your bank must be aware that you intend to use them in Shanghai. Please visit your bank to ensure that your credit cards and bank cards are approved for international use.
- Bring a certain amount of cash if you stay in SJTUSM's international student dormitory.
- If bringing your cell/mobile phone, please ensure that your GSM phone is unlocked. You can purchase a pre-paid SIM card at China Mobile Agency.
- An international travel insurance needs to be purchased before you leave your country.



Electricity

220 Volt 50 AC are used throughout China. The standard wall plug in most households in China has a grounding pin and two power conducting pins in a V-shape.



Departments Accept ICEP-1

Hospital	Department	Language Requirement
Shanghai Ruijin Hospital	Gastroenterology	French/English
	Cardiology	French/English
	Hematology	French/English
	Nephrology	French/English
	Neurology	French/English
	Respiratory Disease	French/English
	Infectious Disease	French/English
	Endocrinology	French/English
	Stomatology	English
	E.N.T.	French/English
	Ophthalmology	French/English
	Dermatology	English
	Emergency Room	French/English
	General surgery	French/English
	Anesthesia	French/English
	Orthopedics	French/English/Japanese
	Thoracic Surgery	English
	Neuro-Surgery	French/English/Japanese
	Urinary Surgery	English
	Radiology	French/English
Ultrasonography	French/English	
Nuclear Medicine	French/English	
TCM	English	
Oncology	English	
Physiatry & Rehabilitation	English	



Departments Accept ICEP-2

Hospital	Department	Language Requirement
Shanghai Xinhua Hospital	E.N.T.	English
	Ophthalmology	English/Japanese
	Nuclear medicine	English/Italian
	Hematology	English
	Neurology	French/English
	Cardiovascular Diseases	English
	Digestive Diseases	English
	Endocrine and Metabolic Disease	English
	General Surgery	English
	Neuro-surgery	English
	Anorectal Surgery	English
	Pediatric Surgery	English
	Pediatric Neurosurgery	English
	Pediatric Urologic Surgery	English
	Orthopedics	English
	Radiology	English
	Stomatology	English
	Pediatric Cardiovascular Disease	English
	Pediatric Hematology	English
	Nephrology	English
Respiratory	English	
Shanghai 9th People's Hospital	Endocrinology	English
	Nephrology	English
	Cardiology	English
	General surgery	English
	Orthopedics	English



Departments Accept ICEP-3

Hospital	Department	Language Requirement
Shanghai 9th People's Hospital	Vascular Surgery	English
	Neurosurgery	English
	Ophthalmology	English
	Otolaryngology Head and Neck Surgery	French/English
	Radiology	English
	Anesthesiology	English
	Urinary Surgery	English
Shanghai Renji Hospital	Gastroenterology	English
	General Surgery	English
	Thorax Surgery	English
	Cardiac Surgery	English
	Neurosurgery	English
	Orthopedics	English
	T.C.M	English
	Emergency	English
Shanghai 6th People's Hospital	Cardiology	English
	Endocrinology and Metabolism	English
	Hematology	English
	Gastroenterology	English
	Respiratory	English
	Nephrology	English
	General Surgery	English
	Orthopedics	English
Gynecology and Maternity	English	



Departments Accept ICEP-4

Hospital	Department	Language Requirement	
	Pediatrics	English	
	Nuclear Medicine	English	
	Anesthesia	English	
	Otolaryngology Head and Neck Surgery	English	
	Radiation Oncology	English	
	Acupuncture	English	
	Radiology	English	
	Shanghai 6th People's Hospital	Ultrasound Medicine	English
		Infection Disease	English
		Neurology	English
Neurosurgery		English	
Urologic Surgery		English	
Cardiothoracic Surgery		English	
Rehabilitation		English	
Plastic surgery		English	
Shanghai Children's Medical Center	Pediatric Cardiology	English	
	Internal medicine (Pediatrics)	English	
	Internal Medicine (Pediatric Cardio-Thoracic Surgery)	English/French/Japanese	
	Hematology & Cardiovascular	English	
	Internal Medicine (Pediatric General Surgery)	English	
	Clinic Nutrition	English	
	Neonatology	English/Japanese	
Shanghai General Hospital	Developmental and Behavioral Pediatrics	English	
	Internal Medicine (Hematological Diseases)	English	
	Gynecological System Diseases	English	
	Clinical Pharmacy	English	



Departments Accept ICEP-5

Hospital	Department	Language Requirement
Shanghai General Hospital	TCM(Acupuncture& Moxibustion)	English
	Emergency Medicine	English
Shanghai Mental Health Center	Psychiatry	English
Shanghai Chest Hospital	Thoracicsurgery	English
	Cardiology	English
	Pulmonary Disease	English
	Oncology, Shanghai Lung Tumor Clinical Medical Center	English
	Cardiac Surgery	French/English
	Critical Care Medicine	English
	Radiation Oncology	English
	Anesthesiology	English
	Pharmacy	English
	Respiratory Endoscopy	English
	TCM	English
	Central Laboratory	English
	Radiology	English
	Nursing	English
International Peace Maternity and Child Health Hospital	Anesthesiology	English
Tong Ren Hospital	Neurology	English/Japanese
	Digestive Endoscopy Center	English/French
	Clinical laboratory	English
	Emergency Medicine	English
	TCM	English



上海交通大学医学院
Shanghai Jiao Tong University School of Medicine

Address: 227 Chong Qing South Road

Tel: +86-21-63846590

Fax: +86-21-63840879

Postcode: 200025

<http://www.shsmu.edu.cn>